

# CERTIFICATE OF LOCATION OF GOVERNMENT CORNER

North 1/4 Corner of Section 24, Township 107N, Range 41W, 5th P.M.

STATE OF MINNESOTA, County of Murray

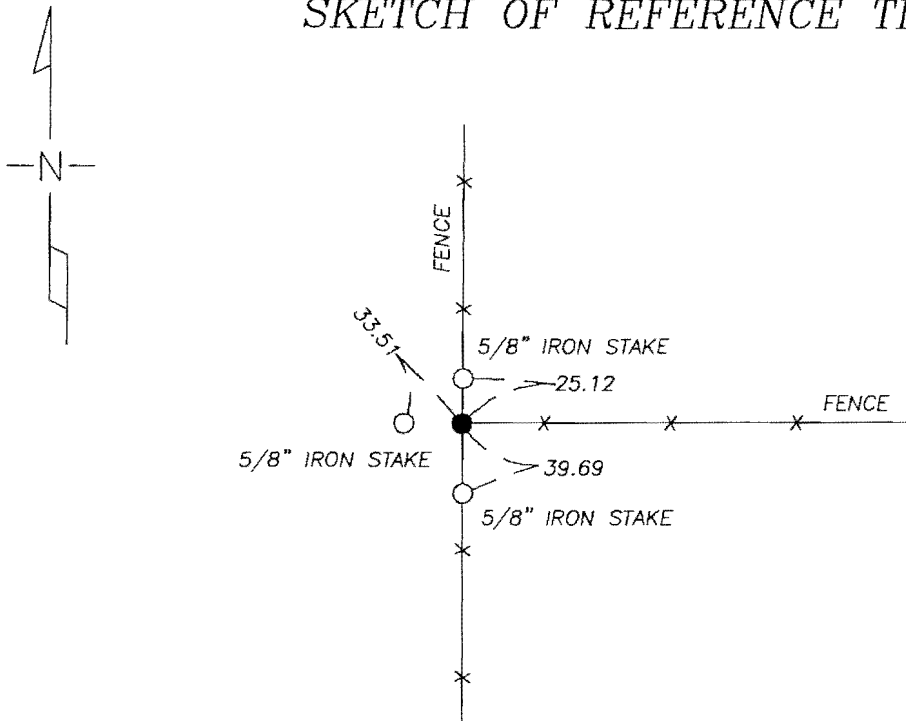
At the corner location shown on the sketch

On 9/30/08 found a wood Corner Post in line with fence North, South & East

left monument as found       lowered monument,       removed monument (explain)

On \_\_\_\_\_ placed a \_\_\_\_\_

## SKETCH OF REFERENCE TIES



N 1/4 COR. COORDINATES  
179310.44 N  
514044.39 E  
MURRAY COUNTY COORDINATES  
NAD 83 (2007)

I hereby certify that this document and the data contained herein was prepared by me or under my direct supervision.

Perry L. Zieske      10-23-08  
SIGNATURE      DATE

MN. LICENSE NO. 43803

Land Surveyor,       Professional Engineer

County Surveyor,       County Engineer

OFFICE OF THE COUNTY RECORDER

I hereby certify that this document was filed in the Co. Recorder's Office at \_\_\_\_\_ on the

\_\_\_\_\_ day of OCT 28 2008

County Recorder James V. Johnson  
By \_\_\_\_\_, Deputy

DOCUMENT NO. \_\_\_\_\_

**Statement of Evidence**

**Original Township Plat indicated the subdivision was surveyed by G.M. Fletcher with date of contract of July 11 1861.**

**Murray County Highway Department records had nothing on this corner.**

**We found a wood corner post at the intersections of fence lines. We dug and probed around corner post and found nothing. It is my opinion that the corner post is best evidence of the original North 1/4 Corner. Actual distances fit well with those in the original survey notes.**



*Perry L. Zieske*  
10-23-08